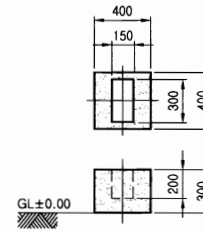
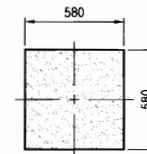


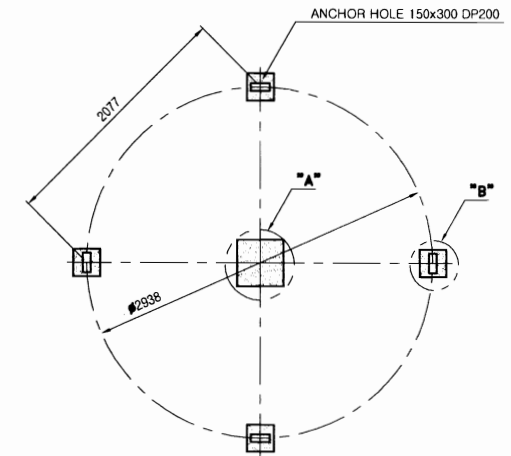
NO	DESCRIPTION	MATERIAL	Q'TY	SIZE	REMARKS
1	MOTOR	T.E.F.C	1 SET	7.5HPx4P	3/440V/60Hz
2	REDUCER	V-BELT	1 SET	180R/T	B - 32" x 5EA
3	MOTOR BASE	SS400+H.D.G	1 SET		
4	FAN	F.R.P	1 SET	φ1800	4 BLADES
5	FAN BOSS	AL+ALLOY	1 SET	φ295	
6	UPPER BODY	F.R.P	4 PI		
7	TURN BUCKLE	SS400+H.D.G	6 EA		
8	SPRINKLER HEAD	AL+ALLOY	1 SET	150A	
9	SPRINKLER PIPE	P.V.C	1 SET	65A	
10	ELIMINATOR	F.R.P	1 SET	2 ¹	
11	CENTER BODY	F.R.P	4 PI		
12	FILLER	P.P	1 LOT	0.4 ¹	SQUARE TYPE
13	CENTER PIPE	S.G.P+H.D.G	1 SET	150A	
14	FILLER SUPPORT	SS400+H.D.G	1 SET		
15	SUPPORT	S.G.P+H.D.G	1 SET	20A	
16	LADDER	S.G.P+H.D.G	1 SET	20A	
17	UNDER BODY	F.R.P	4 PI		
18	STRAINER	SS400+H.D.G	1 SET		
19	SUCTION TANK	SS400+H.D.G	1 SET	300A	
20	LEG	SS400+H.D.G	1 SET	32A	



DETAIL "B"



DETAIL "A"



BASE FOUNDATION

NOTE

- FOUNDATION : R.F CONCRETE (OUT OF SCOPE)
- F.R.P TOLERANCE IS ±20mm.
- NET WEIGHT : 971 KG
- OPERATE WEIGHT : 1856 KG

NO.	REVISION	DATE	DRAWN	CHK'D	APP'R	REFERENCE DRAWING
△						
△						
△						
△						

D H Tech Co., Ltd.
 (주) 디에이테크
 Project NO. _____
 Scale N/S
 Unit mm
 Date 2003. . .
 Size A4

PROJECT : COOLING WATER SYSTEM
 TITLE : ROUND TYPE COOLING TOWER 180 RT ASSY DWG.
 REF. NO. RN373227FVP01801-001
 Rev. No.