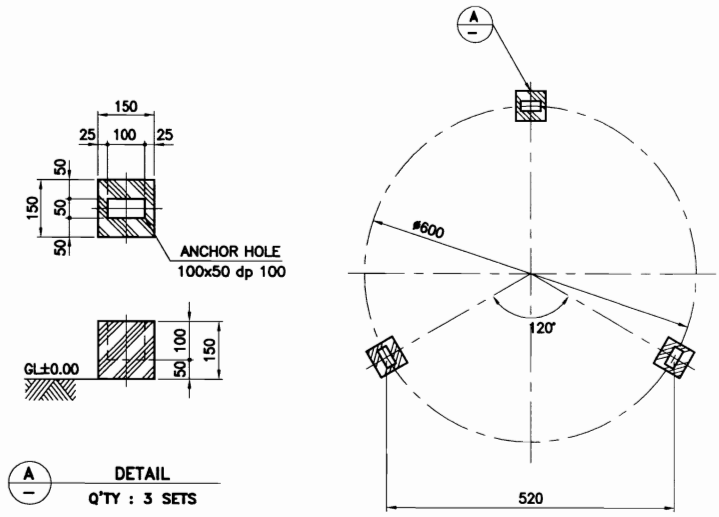


NO	DESCRIPTION	MATERIAL	Q'TY	SIZE	REMARKS
1	MOTOR	T.E.F.C	1 SET	1/4HPx6P	3#220/380/440V/60Hz
2	FAN	AL+ALLOY	1 SET	Ø500	4 BLADES
3	SPRINKLER HEAD	P.V.C	1 SET	40A	
4	SPRINKLER PIPE	P.V.C	4 EA	15A	
5	FILLER	P.P	1 LOT	0.4 ^t	ROLL TYPE
6	CASING	F.R.P	1 SET		
7	LOUVER	F.R.P	1 SET		



FOUNDATION

NOTE

1. REDUCER : DIRECT DRIVE TYPE
2. FOUNDATION : R.F CONCRETE (OUT OF SCOPE)
3. F.R.P TOLERANCE IS ±20mm.
4. NET WEIGHT : 86 KG
5. OPERATE WEIGHT : 123 KG

NO.	REVISION	DATE	DRAWN	CHK'D	APP'R	REFERENCE DRAWING
△						
△						
△						
△						

D H Tech Co., Ltd.
 CI OE OI XI EI EY (주)
 Project NO. _____
 Scale N/S Drawn _____
 Unit mm Design _____
 Date 2003. . . Checked _____
 Size A4 Approved _____

PROJECT : COOLING WATER SYSTEM
 TITLE : ROUND TYPE COOLING TOWER
 10 R/T ASSY DWG.
 REF. NO. RN373227FVP00101-001
 Rev. No.