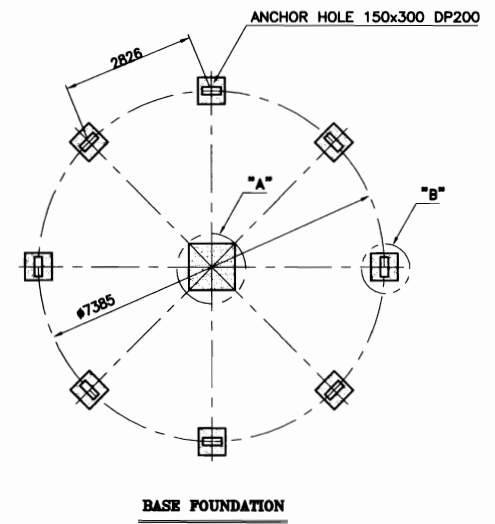
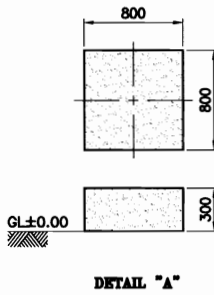
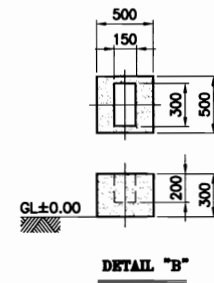


NO	DESCRIPTION	MATERIAL	Q'TY	SIZE	REMARKS
1	MOTOR	T.E.F.C	1 SET	30HPx4P	3ø220/380/440V/60Hz
2	REDUCER	V-BELT	1 SET	800R/T	B - 61" x 11EA
3	MOTOR BASE	SS400+H.D.G	1 SET		
4	FAN	F.R.P	1 SET	ø3600	8 BLADES
5	FAN BOSS	AL+ALLOY	1 SET	ø830	
6	UPPER BODY	F.R.P	16 PI		
7	TURN BUCKLE	SS400+H.D.G	10 EA		
8	SPRINKLER HEAD	AL+ALLOY	1 SET	300A	
9	SPRINKLER PIPE	P.V.C	1 SET	100A	
10	ELIMINATOR	F.R.P	1 SET	2 ^t	
11	CENTER BODY	F.R.P	16 PI		
12	FILLER	P.P	1 LOT	0.4 ^t	SQUARE TYPE
13	CENTER PIPE	S.G.P+H.D.G	1 SET	300A	
14	FILLER SUPPORT	SS400+H.D.G	1 SET		
15	SUPPORT	S.G.P+H.D.G	1 SET	40A	
16	LADDER	S.G.P+H.D.G	1 SET	20A	
17	UNDER BODY	F.R.P	16 PI		
18	STRAINER	SS400+H.D.G	1 SET		
19	SUCTION TANK	SS400+H.D.G	1 SET	ø483	
20	LEG	SS400+H.D.G	1 SET	65A	



NOTE

- FOUNDATION : R.F CONCRETE (OUT OF SCOPE)
- F.R.P TOLERANCE IS ±20mm.
- NET WEIGHT : 6202 KG
- OPERATE WEIGHT : 17990 KG

NO.	REVISION	DATE	DRAWN	CHK'D	APP'R	REFERENCE DRAWING
△						
△						
△						
△						

D H Tech Co., Ltd.
 D H Tech Co., Ltd.
 Project NO. _____
 Scale H/S _____
 Unit mm _____
 Date 2003. . . _____
 Size A4 _____

PROJECT : COOLING WATE SYSTEM
 TITLE : ROUND TYPE COOLING TOWER
 800 RT ASS'Y DWG.
 REF. NO. RN373227FVP08001-001
 Rev. No. _____