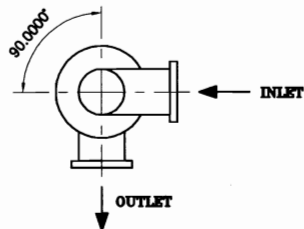
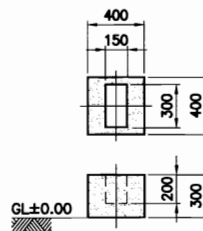


DRAIN 40A  
 OVER FLOW 50A  
 MANUAL MAKE-UP 25A  
 AUTO MAKE-UP 25A  
 INLET 150A  
 OUTLET 150A

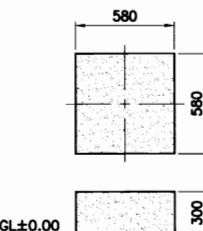


DAE HWA STANDARD WATER FLOW(LA-TYPE)

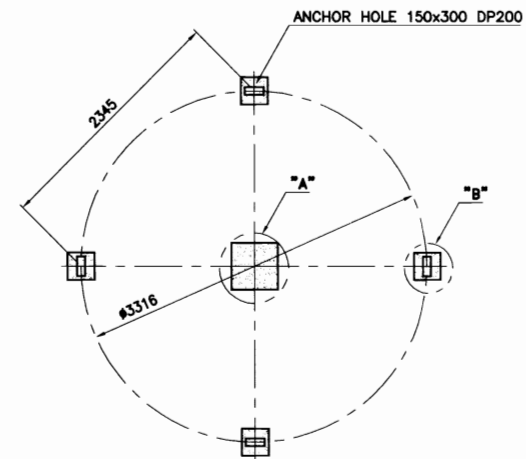
NO	DESCRIPTION	MATERIAL	Q'TY	SIZE	REMARKS
1	MOTOR	T.E.F.C	1 SET	7.5HPx4P	3#220/380/440V/60Hz
2	REDUCER	V-BELT	1 SET	200R/T	B - 32" x 5EA
3	MOTOR BASE	SS400+H.D.G	1 SET		
4	FAN	F.R.P	1 SET	Ø1800	4 BLADES
5	FAN BOSS	AL+ALLOY	1 SET	Ø295	
6	UPPER BODY	F.R.P	4 PI		
7	TURN BUCKLE	SS400+H.D.G	6 EA		
8	SPRINKLER HEAD	AL+ALLOY	1 SET	150A	
9	SPRINKLER PIPE	S.G.P+H.D.G	1 SET	65A	
10	ELIMINATOR	F.R.P	1 SET	2 <sup>t</sup>	
11	CENTER BODY	F.R.P	4 PI		
12	FILLER	P.P	1 LOT	0.4 <sup>t</sup>	SQUARE TYPE
13	CENTER PIPE	S.G.P+H.D.G	1 SET	150A	
14	FILLER SUPPORT	SS400+H.D.G	1 SET		
15	SUPPORT	S.G.P+H.D.G	1 SET	20A	
16	LADDER	S.G.P+H.D.G	1 SET	20A	
17	UNDER BODY	F.R.P	4 PI		
18	STRAINER	SS400+H.D.G	1 SET		
19	SUCTION TANK	SS400+H.D.G	1 SET	300A	
20	LEG	SS400+H.D.G	1 SET	32A	



DETAIL "B"



DETAIL "A"



BASE FOUNDATION

NOTE

- FOUNDATION : R.F CONCRETE (OUT OF SCOPE)
- F.R.P TOLERANCE IS ±20mm.
- NET WEIGHT : 1160 KG
- OPERATE WEIGHT : 2283 KG

NO.	REVISION	DATE	DRAWN	CHK'D	APP'R	REFERENCE DRAWING
△						
△						
△						
△						

Project NO.			
Scale	N/S	Drawn	
Unit	mm	Design	
Date	2003.	Checked	
Size	A4	Approved	

PROJECT : COOLING WATER SYSTEM

TITLE : ROUND TYPE COOLING TOWER  
 200 R/T ASSY DWG.

REF. NO. RN373227FVP02001-001

