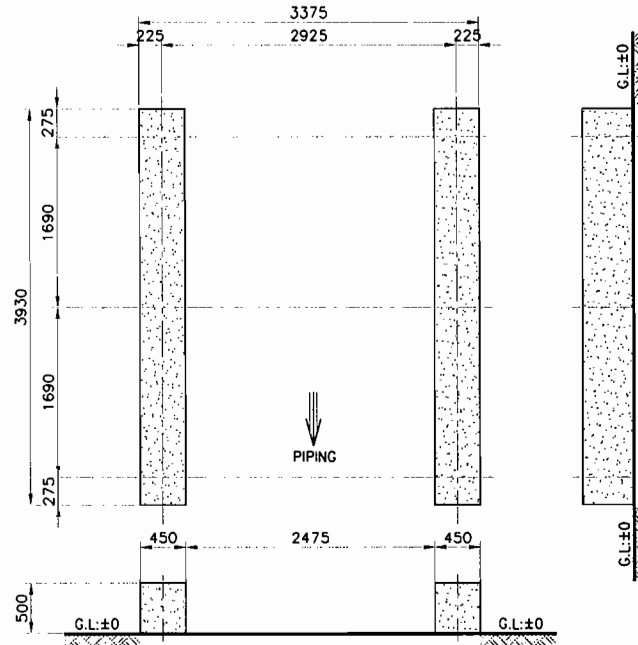


"A"

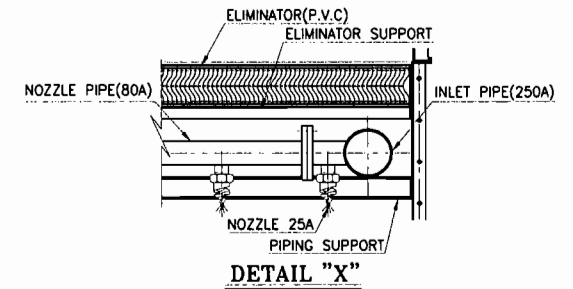
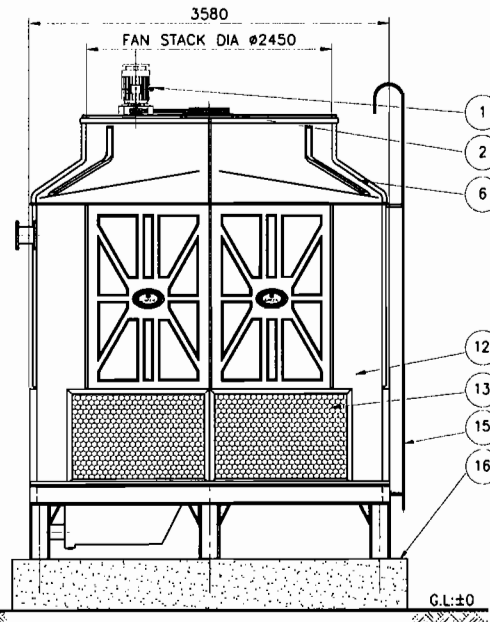
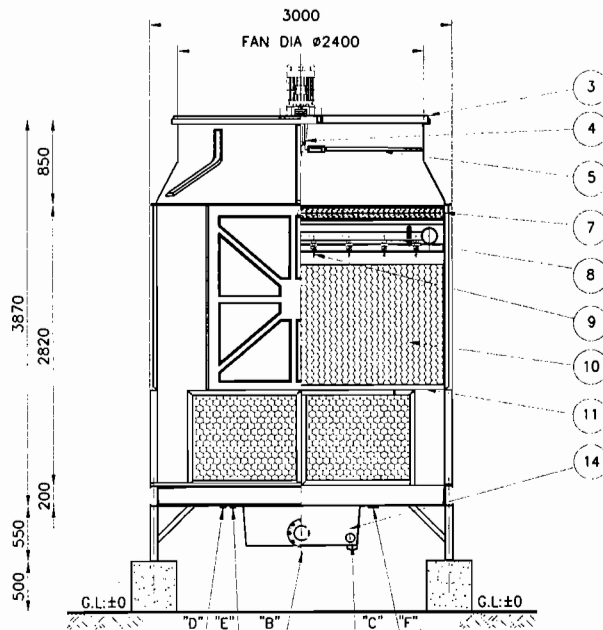


Concrete Foundation

NO	DESCRIPTION	MATERIAL	Q'TY	SIZE	REMARKS
1	MOTOR	T.E.F.C	1SET	15HPx4P	
2	V-BELT	RUBBER	1SET	400R/T	
3	MOTOR SUPPORT	SS400	1SET	4t	H.D.G
4	REDUCER	FC	1SET	400R/T	
5	FAN BLADE	F.R.P	1SET	ø2400	
6	FAN STACK	F.R.P	1SET	ø2450	
7	ELIMINATOR	P.V.C	1SET	-	
8	NOZZLE PIPE	P.V.C or P.E	1SET	80A	
9	NOZZLE	P.P	1LOT	25A	
10	FILLER	P.V.C	1LOT	0.4t	
11	FILLER SUPPORT	SS400	1SET	4t	H.D.G
12	CASING(BODY)	F.R.P	1SET	5t	
13	LOUVER	EX/METAL	1LOT	400R/T	H.D.G
14	COLD WATER BASIN	F.R.P	1SET	5t	
15	LADDER	S.P.P.W	1SET	20A	
16	FOUNDATION	CON'C	1LOT	-	OUT OF SCOPE

SPECIFICATION DATA			LOADING DATA
1	CIRCULATING WATER FLOW	312M <sup>3</sup> /HR(400R/T)	SHIPPING WEIGHT 2050KG
2	NOMINAL CAPACITY	1,560,000Kcal/hr	
3	HOT WATER TEMPERATURE	37 °C	OPERATING WEIGHT 4950KG
4	COLD WATER TEMPERATURE	32 °C	
5	WET BULB TEMPERATURE	27 °C	

PIPE SPECIFICATION DATA			
NO	NAME	SIZE	CONECTION
A	INLET PIPE	250A	FLANGE
B	OUTLET PIPE	250A	FLANGE
C	DRAIN PIPE	50A	SOCKET
D	AUTOMATIC MAKE UP	40A	SOCKET
E	MANUAL MAKE UP	40A	SOCKET
F	DVER FLOW	80A	SOCKET



**DH Tech Co., Ltd.**  
 디에이테크(주)

PROJECT : COOLING TOWER  
 COUNTER FLOW TYPE.

TITLE :  
**DHG-CU-400**

Project NO. \_\_\_\_\_  
 Scale N/S \_\_\_\_\_  
 Unit mm \_\_\_\_\_  
 Date 2006. 10. 13. \_\_\_\_\_  
 Size A3 \_\_\_\_\_

Drawn \_\_\_\_\_  
 Design \_\_\_\_\_  
 Checked \_\_\_\_\_  
 Approved \_\_\_\_\_

NO. \_\_\_\_\_  
 REVISION \_\_\_\_\_  
 DATE \_\_\_\_\_  
 DRAWN \_\_\_\_\_  
 CHK'D \_\_\_\_\_  
 APP'R \_\_\_\_\_  
 REFERENCE DRAWING \_\_\_\_\_

OWG. NO. \_\_\_\_\_  
 Rev. No. \_\_\_\_\_